

SANITARY DISTRICT NO. 1

Marin County, California

PS 15 KENTFIELD COMMUNOTOR REPLACEMENT PROJECT

Bid Opening: 1:00 PM on August 3, 2017

ADDENDUM NO. 1

SPECIFICATIONS

1. **Section 16100, Page 6, Paragraph 2.07.B. RIGID 316L STAINLESS STEEL
CONDUIT**

Replace the original Paragraph 2.07 with Paragraph 2.07 given below:

“2.07 CONDUIT

- A. *All conduits, fittings, condulets, and conduit clamps shall be Type 316L stainless steel.*
- B. *Couplings, connectors, conduit bodies and fittings shall be Type 316L stainless steel.*
- C. *Type 316L stainless steel conduit tools: Tools used for cutting, bending and threading shall be for Type 316L stainless steel and shall be approved for use by the conduit manufacturer. Damaged conduit resulting from the use of tools not recommended by the conduit manufacturer is not acceptable and shall be replaced at no additional cost to the Owner.*
- D. *Conduit Sealant: Putty-type electrical duct sealant
Manufacturers: Gardner Bender DS-110N or accepted equal.”*

PLANS

1. **SHEET 3 OF 9, DECK PLAN, PIT PLAN AND DEMOLITION**

Change the COMMUNOTOR ROOM PLAN as shown on the attached SKETCH
8576ADD-1.

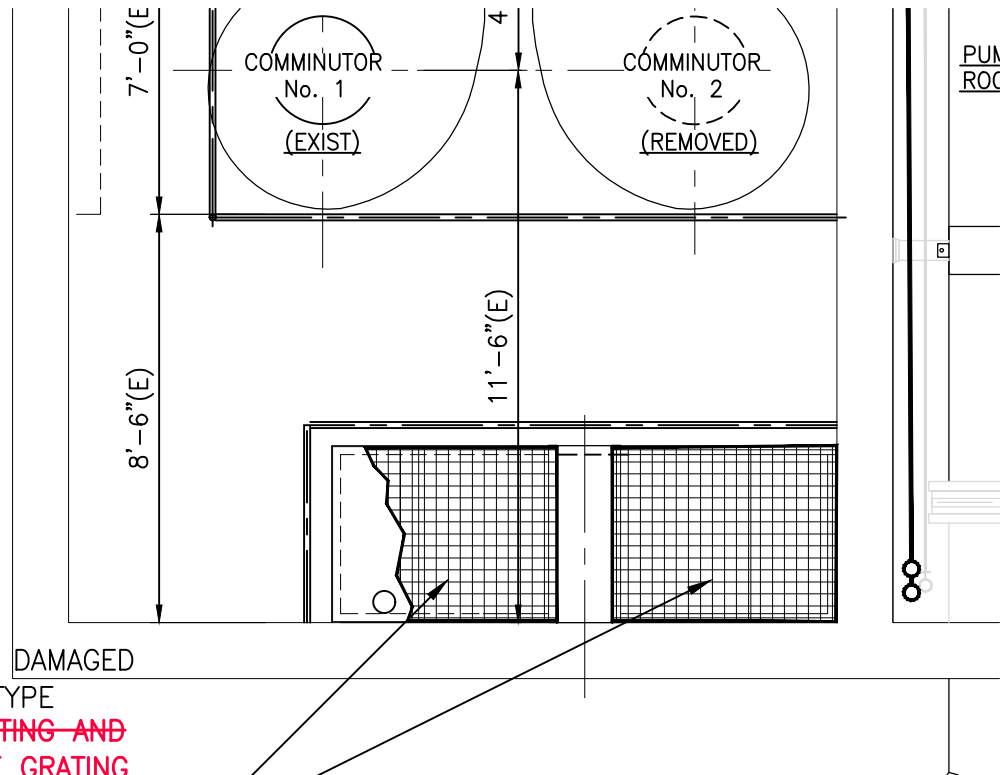
2. **SHEET 6 OF 9, ELECTRICAL MISCELLANEOUS DETAILS, BACKPAN LAYOUT**

Delete sentence from NOTE: “...~~PANEL SUPPLIER MAY BE FIELD INSTALLING INTRINSICALLY SAFE RELAYS ON CONTROL PANEL BACKBOARD...~~”

(Franklin Miller has made the following determination: “The moisture sensor and thermostat are run through the potted motor cable cap. Intrinsic safety relays are not required for Class 1, Div 1 rating”.)

3. **SHEET 9 OF 9, ELECTRICAL WIRING DIAGRAMS, Franklin Miller Duplex S250 Controller**

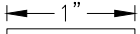
NOTE TO CONTRACTOR. There is no remote emergency stop (E-Stop) being installed for this project.



REMOVE AND REPLACE DAMAGED GRATING FRAMES W/ TYPE 316L SS, ~~MODIFY GRATING AND REINSTALL (E)~~ REMOVE GRATING PANELS AND REPLACE W/ NEW 2" DEEP MOLDED FRP GRATING

COMMINUTOR ROOM PLAN

SCALE: 3/8" = 1'-0"



IF THIS DOES NOT MEASURE ONE INCH, THESE PLANS ARE NOT TO SCALE.

SANITARY DISTRICT NO. 1
KENTFIELD PS COMMINUTOR REPLACEMENT PROJECT
REPLACE EXISTING GRATING PANELS
07-28-2017 SHT 1 OF 1 SKETCH 8576ADD-1